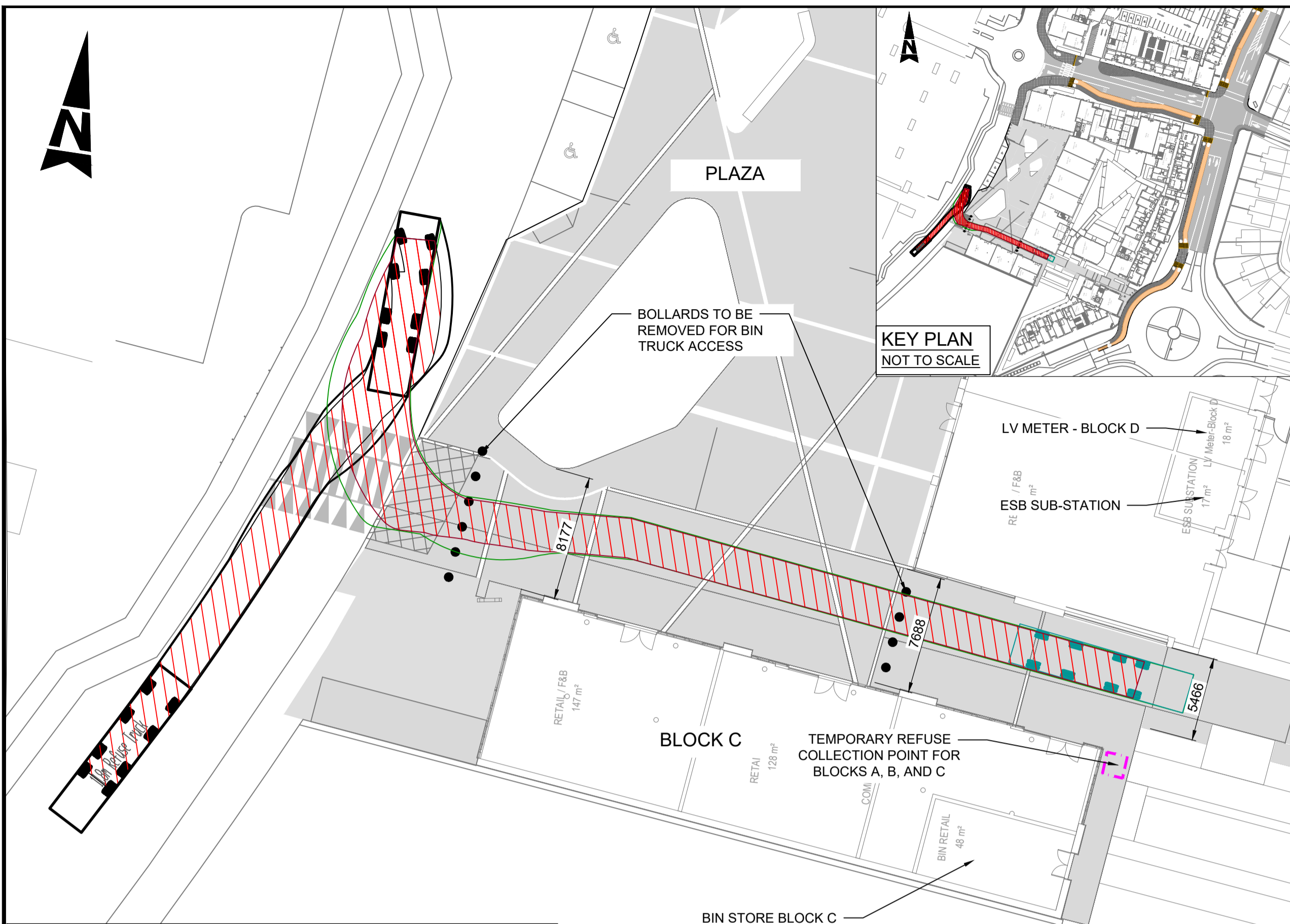


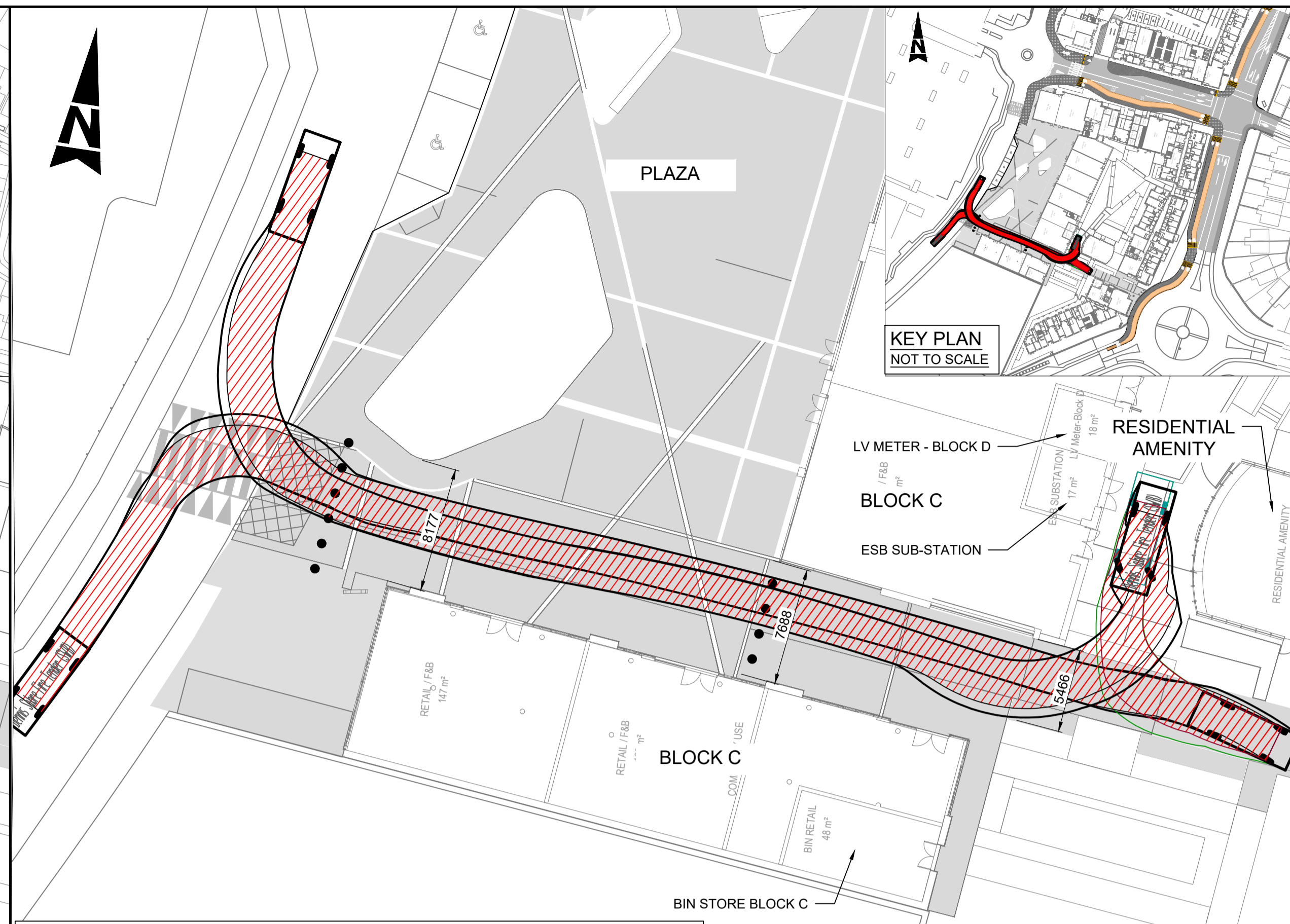
A1

DO NOT SCALE

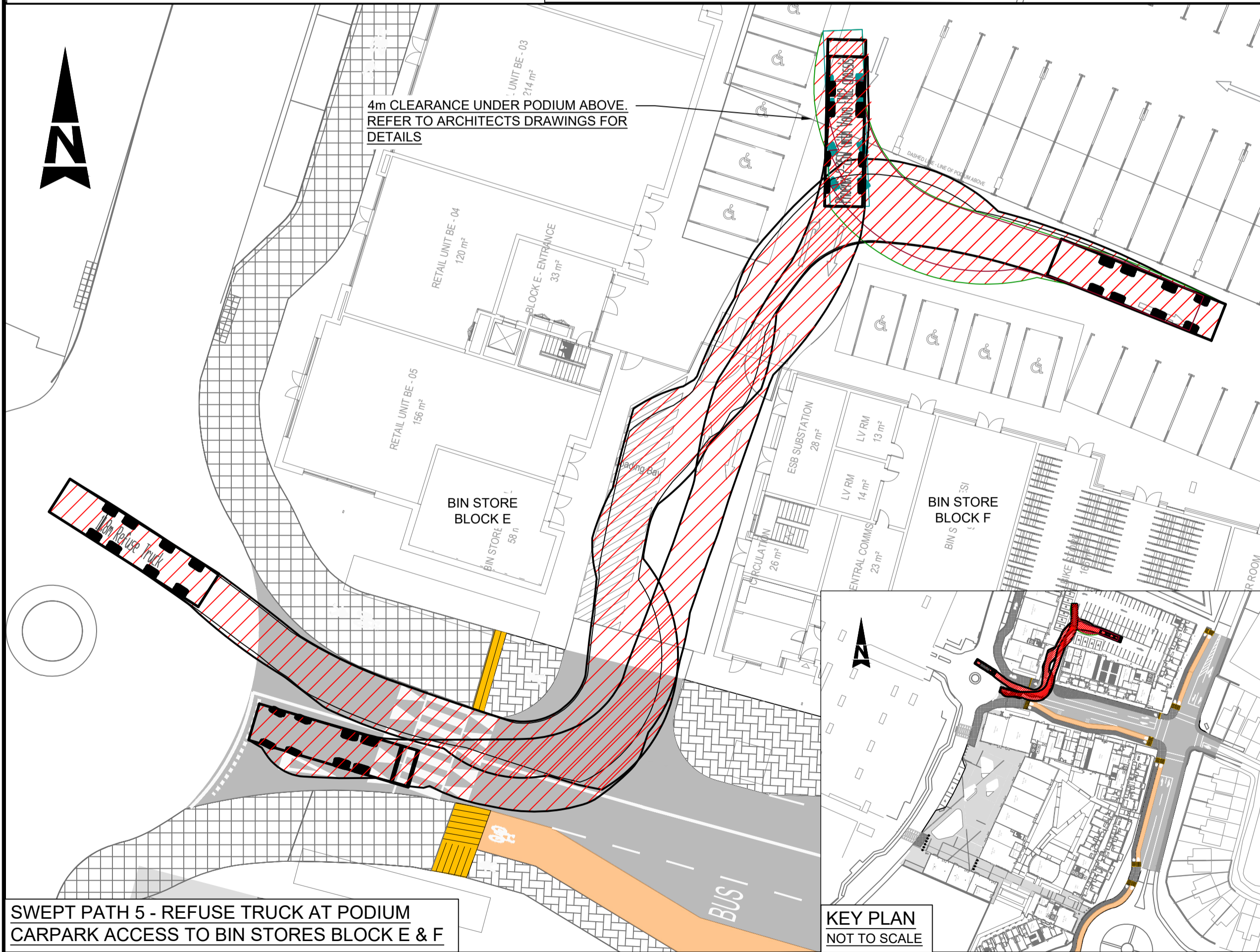
File: 5168265-ATK-HT-SK-1010.DWG
Date: Oct 30, 2019 - 12:26pm
Plotted by: Akonplokiszer



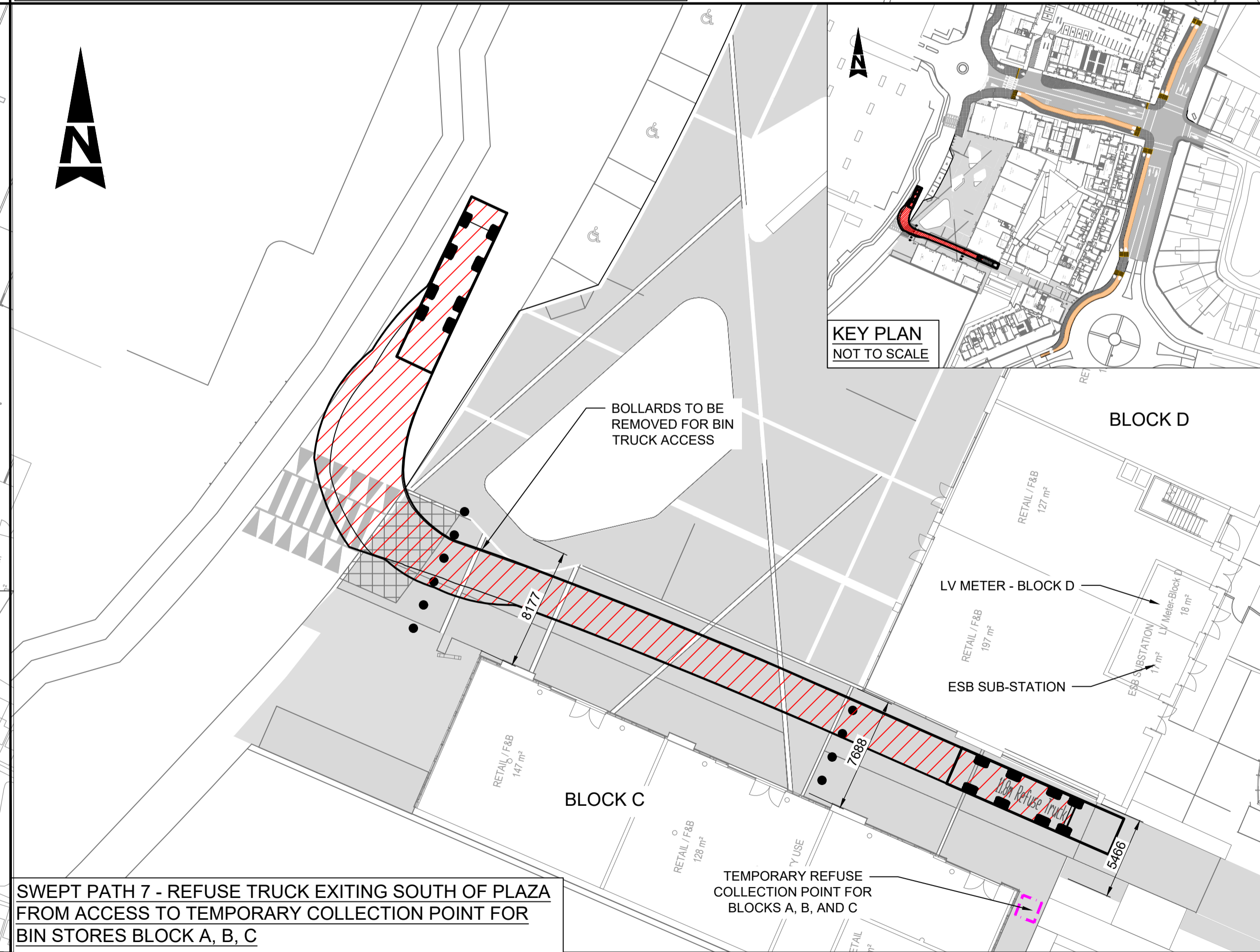
SWEPT PATH 4 - REFUSE TRUCK ACCESS TO TEMPORARY COLLECTION POINT FOR BIN STORES BLOCK A, B, C.



SWEPT PATH 6 - ESB MAINTENANCE VEHICLE (SIMILAR TO EMERGENCY VEHICLE) ACCESS TO BLOCK D



SWEPT PATH 5 - REFUSE TRUCK AT PODIUM CARPARK ACCESS TO BIN STORES BLOCK E & F



SWEPT PATH 7 - REFUSE TRUCK EXITING SOUTH OF PLAZA FROM ACCESS TO TEMPORARY COLLECTION POINT FOR BIN STORES BLOCK A, B, C

- GENERAL NOTES**
1. ALL DIMENSIONS ARE IN METRES UNLESS NOTED OTHERWISE
 2. ONLY WRITTEN DIMENSIONS SHALL BE USED. NO DIMENSIONS SHALL BE SCALED FROM THE DRAWINGS
 3. ALL LEVELS ARE IN METRES AND ARE TO MALIN HEAD DATUM
 4. ALL COORDINATES ARE IN METRES AND ARE TO IRISH TRANSVERSE MERCATOR
 5. DRAWINGS ARE TO BE READ IN CONJUNCTION WITH THE SPECIFICATION
 6. POSITIONS OF EXISTING UTILITIES ARE BASED ON RECORDS FROM UTILITY COMPANIES WHERE AVAILABLE. THESE ARE SHOWN FOR BACKGROUND INFORMATION ONLY.
 7. ALWAYS REFER TO UTILITY RECORDS PACK AND VERIFY POSITIONS OF ASSETS ON SITE PRIOR TO COMMENCING ANY EXCAVATIONS.

VEHICLE PROFILES

EMERGENCY VEHICLE

Dennis Sabre Fire Tender (SWB)

Overall Length	22.966ft
Overall Width	7.972ft
Overall Body Height	11.521ft
Min Body Ground Clearance	1.301ft
Track Width	7.808ft
Lock-to-lock time	5.00s
Curb to Curb Turning Radius	22.425ft

REFUSE VEHICLE

11.8m Refuse Truck

Overall Length	11.800m
Overall Width	2.600m
Overall Body Height	3.205m
Min Body Ground Clearance	0.410m
Track Width	2.500m
Lock-to-lock time	4.00s
Curb to Curb Turning Radius	9.250m

- LEGEND:**
- PROPOSED REMOVABLE SOCKET BOLLARDS
 - PROPOSED PAVEMENT

<p>Member of the SNC-Lavalin Group</p>			STAGE 3 SUBMISSION		
			VEHICULAR TRACKING SHEET 2 OF 3		
Client: KNOCKNACARRA DISTRICT CENTRE		Original Scale: Not To Scale	Design/Drawn: RG	Checked: KG	Authorised: SC
Project: KNOCKNACARRA DISTRICT CENTRE		Date: 16.05.19	Date: 16.05.19	Date: 16.05.19	Date: 16.05.19
Status: I		Drawing Number: 5168265 / ATK / SK / 1010		Rev: A	

Rev	Description	By	Date	Chk'd	Auth
A	ISSUED FOR INFORMATION	YC	02.10.19	KG	KG
-	ISSUED FOR INFORMATION	RG	14.05.19	AN	KG

Atkins House, 150-155 Airside Business Park, Swords, Co. Dublin
Tel (+353) 01 810 8000 Fax (+353) 01 810 8001

Unit 2B, 2200 Cork Airport Business Park, Cork
Tel (+353) 021 429 0300 Fax (+353) 021 429 0360

2nd Floor Technology House Parkmore Technology Park, Galway
Tel (+353) 091 786 0350 Fax (+353) 091 779 830